

Things to Know Before Traveling to RDC in 2025



Arrival and Departure Times

To allow staff enough time to properly clean and sanitize lodging accommodations, **Check-in is after 4 p.m.**, and **Check-out is no later than 10 a.m.** Arriving guests should not enter their accommodations before registering at the office.

In an effort to keep our community healthy, we strongly encourage all guests to be vaccinated against COVID-19 and test prior to arrival.

We accept cash or check as a payment.

Please remember to bring your checkbook. We do not accept credit cards.

RDC Boathouse Update

All rentals have limited availability. Weekly boat rentals may be reserved prior to your arrival. Cancellations for weeklong boat rentals must be called into the office by 4 p.m. the day before your arrival. **There will be a one-day rental charge for each cancelled boat after delivery.** Daily rentals may be requested upon your arrival and will be provided if available. For boat rates, descriptions, and photos visit www.RDCsquam.com.

Motorboats

RDC guests, and their guests, may not bring boats with motors in excess of 25 horsepower to Camp. Camp is dedicated to the principle that strict limits on horsepower are essential to ensuring a truly inclusive Squam Lake community and a sustainable ecosystem for future generations to enjoy. RDC promotes low impact boating by providing a rental fleet consisting of canoes, kayaks, paddleboards, sailboats, and rowboats with 4 HP motor options.

Dining Hall Etiquette

The RDC dining halls are an integral part of the overall Camp experience. In the spirit of this, we would like to remind you of some important dining hall guidelines. While the dining hall dress code has become more relaxed over the last several decades, RDC is proud of its time-honored custom of dressing for dinner. For many guests, this is an important and traditional aspect of their RDC experience. We would like to remind all of our guests of the RDC dress code and request that you follow these simple guidelines while inside the dining hall. Young children should be supervised at all times by an adult. Children should refrain from running for the safety of all. To help maintain the sense of community and camaraderie while at meals, we would also like to remind you to please not use cell phones or laptops while in the Camp dining halls. Please see below for guidance on dinner attire.



Dress code: No caps, tank tops, bathing suits or bare feet at any meal. Casual sportswear is acceptable for breakfast and lunch but more appropriate dress is recommended for dinner (non-athletic shorts, pants, collared shirt for men; dresses, skirts, pants, non-athletic shorts for women).

Golf Cart Rentals

RDC has a limited number of golf carts available for weekly rentals. If you requested a golf cart and one is not available, it will be noted on your reservation form. RDC recommends the following golf cart rental companies: Newfound Super Sports (nhgolfcarts.com) and North Country Golf Car (northcountrygolfcar.com). Both companies will deliver to RDC.

Housekeeping and Outside Crew

We offer full daily housekeeping and outside crew services. If you prefer a lower-contact experience and would like to opt-out of any portion of these services, you may notify our office staff at any time.

Don't feel you have to bring everything, but a flashlight is essential!

Here are a few other items to consider...

- **Flashlights (worth mentioning twice!)**
- Reusable water bottle and/or hot cup (water bottle filling stations available)
- Hiking gear (including boots)
- Daypack
- Camera
- Fishing gear
- Swimming accessories
- Beach towels
- Sunscreen
- Sports equipment (tennis racquet, softball mitt, etc.)
- Hair dryer
- Warm jacket and sweater
- Collared shirt for men (please see Dining Hall Etiquette on front page)
- Insect repellent
- Binoculars
- Reading glasses and/or sunglasses
- Child/Infant life preservers
- General toiletries
- Rain gear
- A good book or two

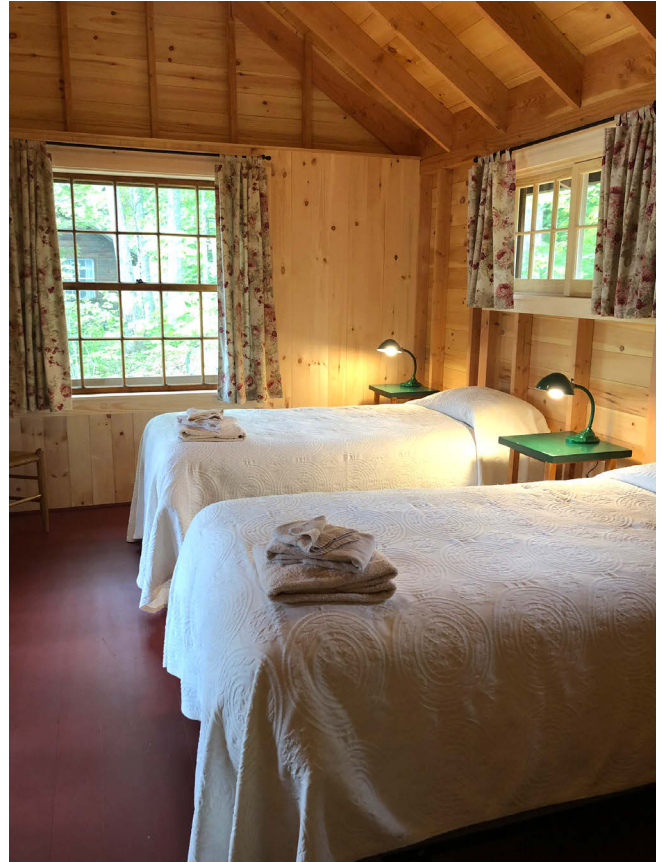


Photo by Lucy Moore

Off-Season Guest Reminder

RDC partners with several organizations to host special events each summer during our early and late season. Many of these events are open to the public. Check out our events page at www.RDCsquam.com/rdc-conferences-events/ to see if one interests you! **If your reservation falls in June or September, during our off-season Group and Conference weeks, please note activities and amenities may be limited.** In addition, the Deephaven Dining Hall may be closed and all guests will enjoy their meals in the Rockywold Dining Hall. Meal hours may also be adjusted from the regular summer schedule and will be announced and posted throughout Camp.

If we can be of further assistance prior to your stay, please don't hesitate to give us a call at 603-968-3313.

We look forward to having you with us this summer!

Rockywold-Deeplaven Camps, Inc. | 18 Bacon Road, Holderness, NH 03245
Telephone: (603) 968-3313 | E-mail: RDC@RDCsquam.com | Website: www.RDCsquam.com

